



ATTENTION: Observe precautions for handling electrostatic sensitive devices.



Tools required: #1 crosshead (Phillips) screwdriver.

1. Disconnect power cord to the AG 5900 / EG 6000® and touch any metal part of it to discharge static electricity. Remove blank filler plate screws using the #1 crosshead screwdriver (**Figure 1**).

 **Apply firm pressure initially to break screws free to prevent damage to the screw head.**



Figure 1 Blank filler plate

2. Press firmly with thumbs on the underside lip of the blank filler plate to eject it (**Figure 2**). Retain screws and blank filler plate for possible future use.



Figure 2 Blank filler plate removal


3.  Unpack the module taking care not to touch electronic parts or card edge gold contact points (**Figure 3**).



Figure 3 Fiber Module


4.  Touch any metal part of the AG 5900 / EG 6000 chassis again to discharge static electricity then carefully insert module into rails and press firmly on lower corners to seat into place (**Figure 4**).



Figure 4 Inserting module

- Secure module in chassis using module faceplate spring screws (**Figure 5**).



Figure 5 Module secured in chassis

- Reconnect power to the AG 5900 /EG 6000 and power on. Configuration of the new module can then be completed via the web management interface (WMI) or serial or telnet command line interface.

 **Please see page 116 of the Nomadix user guide for more information on configuration.**

Transceivers can be installed with the AG 5900 /EG 6000 powered on. Make sure bale clasp is closed, insert transceiver and press firmly until seated (**Figure 6**).



Figure 6 Inserting transceivers

Transceivers are removed by opening the bale clasp, grasping the transceiver and pulling out (**Figure 7**).



Figure 7 Removing transceivers



To remove the module, disconnect power cord to the AG 5900 /EG 6000 and touch any metal part of it to discharge static electricity. Unscrew the faceplate spring screws, pull on them gently or apply pressure to the underside of the module if necessary to eject it from the chassis (**Figure 8**).



Do not remove crosshead screws on the bottom of the module.

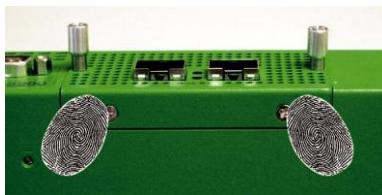


Figure 8 Removing module



Observe precautions for handling electrostatic sensitive devices when removing the module.

