

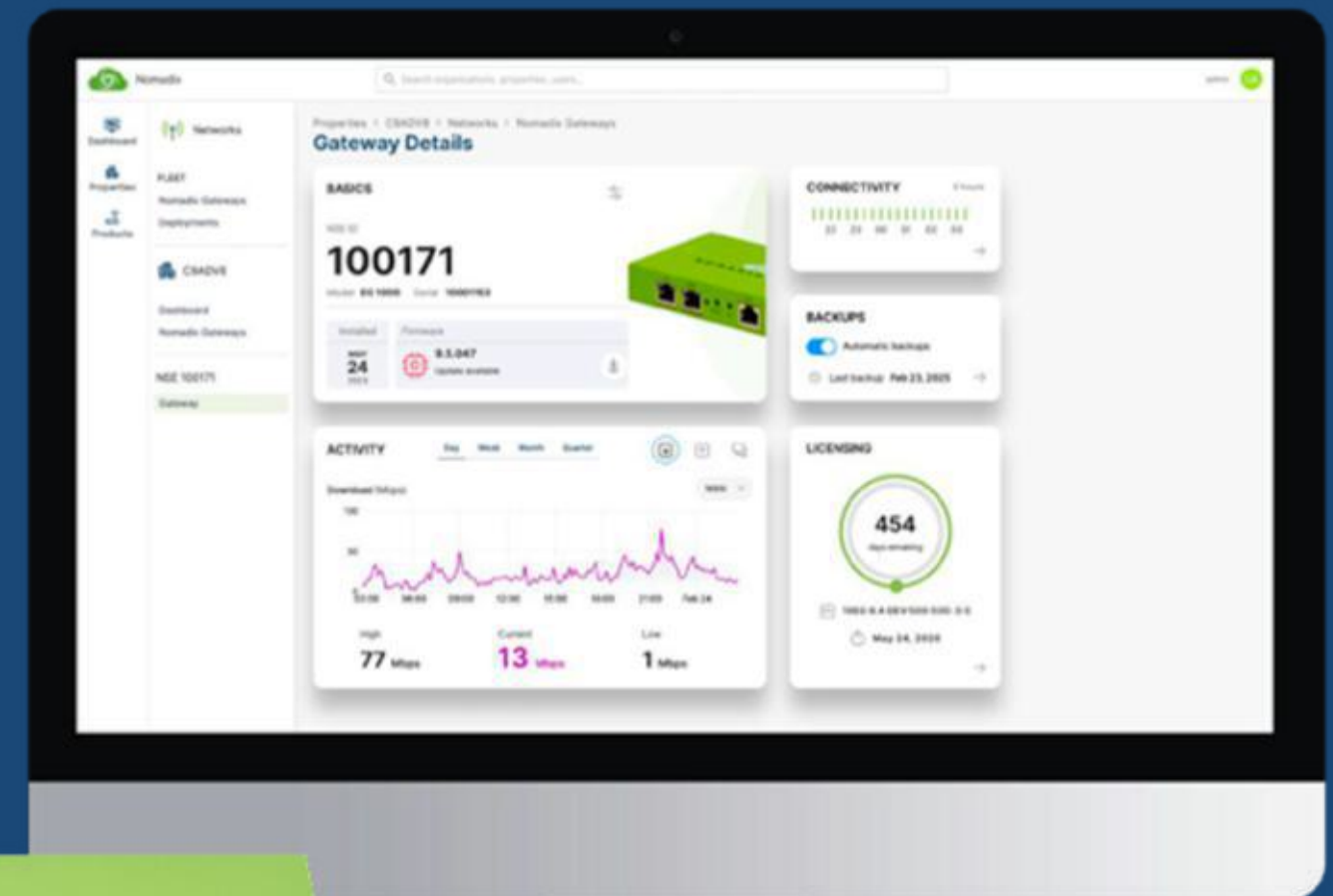
NOMADIX GATEWAYS



HIGH-SPEED INTERNET GATEWAY PORTFOLIO

Market Leading Property Internet Management

- User experiences alignment with a brand's policies or loyalty program
- Dynamic bandwidth management
- Lightning-fast DHCP server
- Hardware agnostic - works with any vendor equipment
- Numerous complementary services via optional software modules
- Demonstrable thought leadership and product longevity





	EG 1000	EG 5K	EG 6000
Capacity	<ul style="list-style-type: none"> Devices: 100 - 1,000 Bandwidth: 100 Mbps - 1 Gbps 	<ul style="list-style-type: none"> Devices: 500 - 5,000 Bandwidth: 500 Mbps - 5 Gbps 	<ul style="list-style-type: none"> Devices: 1,000 - 8,000 Bandwidth: 1 Gbps - 10 Gbps
Physical I/O	<ul style="list-style-type: none"> 2 x 1 Gbps RJ45 ports (WAN or LAN configurable, act / link and speed per port) 1 x Console Micro USB 3.0 port 1 x PMS RJ45 asynchronous port (Requires optional software module) 1 x Reset button 1 x Power on/off button 	<ul style="list-style-type: none"> 4 x 2.5 Gbps RJ45 ports (WAN or LAN configurable, act / link and speed per port) 2 x Console USB 3.1 ports (Requires optional USB to RS232 connection cable) 1 x PMS RJ45 asynchronous port (Requires optional software module) 1 x Reset button 1 x Power on/off button 	<ul style="list-style-type: none"> 6 x 1 Gbps RJ45 ports (WAN or LAN configurable, act / link and speed per port) 2 x 1 Gbps SFP ports (WAN or LAN configurable, requires fiber transceivers) 2 x 10 Gbps SFP+ ports, via optional expansion card (WAN or LAN configurable, requires fiber transceivers) 2 x Console USB 3.0 ports (Requires optional USB to RS232 connection cable) 1 x PMS RJ45 asynchronous port (Requires optional software module) 1 x LCD (Software version, NSE ID and primary WAN IP address) 1 x Reset button 1 x ATX Power switch 1 x Power status indicator
Mounting	<ul style="list-style-type: none"> Wall mountable (2 x holes in the chassis) Kensington lock 	<ul style="list-style-type: none"> 19" Rack mountable, 1U (Kit included in the box) 	<ul style="list-style-type: none"> 19" Rack mountable, 1U (Kit included in the box)
Airflow	<ul style="list-style-type: none"> Fan-less design (thermal pads) 	<ul style="list-style-type: none"> 1 x Smart fan and passive CPU heat sink 	<ul style="list-style-type: none"> 2 x Smart fans and passive CPU heat sink
Power Supply	<ul style="list-style-type: none"> 12 V, 3 A, 36 W AC 100-240 V @ 47-63 Hz 	<ul style="list-style-type: none"> 12 V, 10 A, 40 W AC 115-230 V @ 47-63 Hz 	<ul style="list-style-type: none"> 220 W ATX single PSU AC 90-264 V @ 47-63 Hz
Dimensions (W x D x H)	<ul style="list-style-type: none"> 140 mm x 80 mm x 25 mm 5.51 in. x 3.15 in. x 0.98 in. 	<ul style="list-style-type: none"> 165 mm x 92 mm x 40 mm 6.5 in. x 3.62 in. x 1.57 in. 	<ul style="list-style-type: none"> 438 mm x 321 mm x 44 mm 17.24 in. x 12.64 in. x 1.73 in.
Weight	<ul style="list-style-type: none"> 247 g 0.54 lbs 	<ul style="list-style-type: none"> 586.84 g 1.29 lbs 	<ul style="list-style-type: none"> 7.5 kg 16.53 lbs
Temperature	<ul style="list-style-type: none"> Operating: 0°C to 40°C / 32°F to 104°F Storage: -20°C to 70°C / -4°F to 158°F 	<ul style="list-style-type: none"> Operating: 0°C to 40°C / 32°F to 104°F Storage: -20°C to 60°C / -4°F to 140°F 	<ul style="list-style-type: none"> Operating: 0°C to 40°C / 32°F to 104°F Storage: -20°C to 70°C / -4°F to 158°F
Humidity	<ul style="list-style-type: none"> Operating: 5% to 90% RH (non-condensing) Storage humidity: 10% to 95% RH (non-condensing) 	<ul style="list-style-type: none"> Operating: 10% to 80% RH (non-condensing) Storage humidity: 10% to 80% RH (non-condensing) 	<ul style="list-style-type: none"> Operating: 5% to 90% RH (non-condensing) Storage humidity: 10% to 95% RH (non-condensing)
Certifications	RoHS, CE/FCC Class A, UL, CCC		

Reliability	<ul style="list-style-type: none"> Multi-unit clustering Configuration backup & restoration Watchdog Active-passive failover High-availability clustering Multi-WAN link load balancing & failover (not available with EG 1000, as it only offers 1 x WAN port) Link Aggregation Control Protocol (LACP) (not available with EG 1000, as it only offers 1 x LAN port)
Plug and Play	<ul style="list-style-type: none"> Dynamic Address Translation (DAT) Dynamic transparent proxy IPv6
Service Provisioning	<ul style="list-style-type: none"> Home page redirect HTTP & HTTPS redirect Portal page redirect Session termination redirect Information & control console Pop-up logout button International language support External portal web server mode Internal portal web server mode Secure XML API over SSL Login page failover
Network Management	<ul style="list-style-type: none"> Multi-level administration Centralized RADIUS authentication Access control Web Management Interface (WMI) Command Line Interface (CLI, SSH) RADIUS driven configuration NTP Support SNMP (V2c, V3) System/AAA log TR069 support
Policy-Based Traffic Shaping	<ul style="list-style-type: none"> Class-Based Queueing Weighted Fair Queueing Distribution of unused bandwidth Group bandwidth management QoS tagging (802.1p & DiffServ) Per Device or Group of devices bandwidth capping
IP Address Management	<ul style="list-style-type: none"> IEEE 802.3/3ul/3ab DHCP server, client & relay Multi-subnet support IP upsell PPPoE client

Billing Plans Enablement	<ul style="list-style-type: none"> RADIUS client RADIUS proxy Port-based policies VLAN / port mapping Local database Property Management System (PMS) Credit card interface
Advanced Security	<ul style="list-style-type: none"> iNAT IPSec support IPSec LAN to LAN PPTP support Session rate limiting URL filtering MAC address filtering ICMP blocking Proxy ARP for device to device communications Lawful Intercept, monitoring, logging and compliance with legislative requirements User agent filtering
Access Control and Authentication	<ul style="list-style-type: none"> Authorization, Authentication & Accounting (AAA) Walled garden Group accounts Tri-mode authentication Universal access method over SSL IEEE 802.1x Smart client support (Boingo, iPass) MAC authentication Remember-me login Access codes Zone migration
Firewall	<ul style="list-style-type: none"> Native policy-based inspection firewall Granular configuration rules for groups, policies & ACL Applicable to WAN, subscribers, individual interfaces & globally
VLAN Support	<ul style="list-style-type: none"> IEEE 802.1Q IEEE 802.1ad

Functionality

Add-On Native Software Modules

- Advanced Features (already included with EG 5K and EG 6000)
- Routed Subscribers
- Load Balancing (not available with EG 1000)
- Active-Passive Failover
- High-Availability Clustering
- PMS Integration
- Built-in Firewall
- Passpoint (Hotspot 2.0)
- Hotel Portal
- Captive Portal
- Multi-Tenant Units / Multi-Dwelling Units (MTU / MDU)
- Cloud Telephony
- Payment Gateway

Management

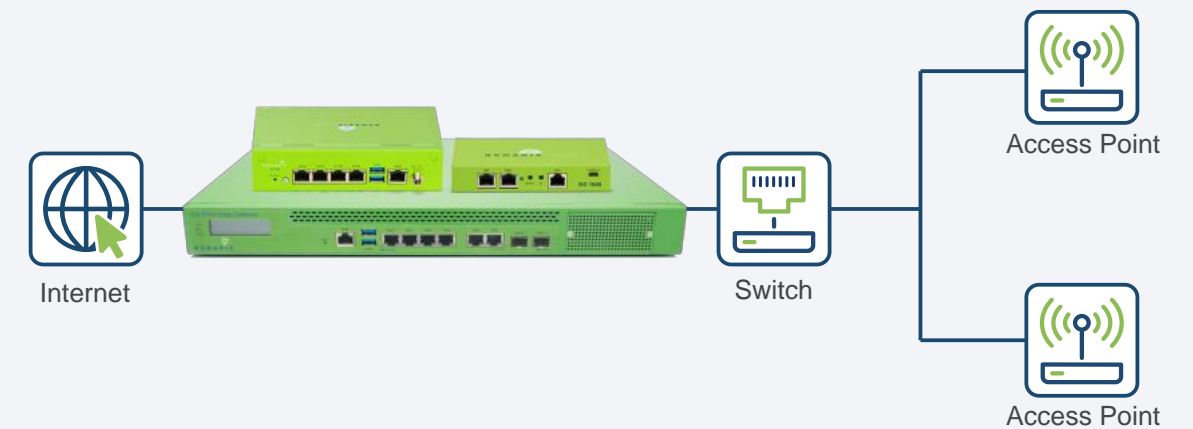
Nomadix Cloud Management

- **Fleet dashboard:** search & filter, highlight gateways requiring attention, export data
- **Gateway dashboard:** key information, activity, connectivity, licensing, contract expiry date
- **Backup & restore:** save gateway settings, schedule operations, export save files
- **Firmware upgrade:** highlight availability, schedule operations, backup settings



High-Level Topology

- Deployment at the network's edge
- Resilient & secure
- Local packet-processing
- Cloud-connected



Nomadix Service Engine, Dynamic Address Translation and iNAT are trademarks or registered trademarks of Nomadix, Inc. Other names and brands may be claimed as the property of others.