



Purpose: To use In Room Port Mapping to create the Port Mapping list.

Step 1: Enable In Room Port Mapping and port identification.

This will either be VLAN ID or and Access Concentrator Query.

Port-Location Settings

In Room Port Mapping Enable

Username

Password

Note: for security reasons this option should be disabled when In Room Port Mapping is done.

No Port-Location mapping

VLAN IDs

802.1Q one-way

802.1Q two-ways

Access Concentrator Query

Tut Systems Espresso

Lucent DSL Terminator

Tut MDU Lite Systems

RFC1493 Compliant Systems

RiverDelta 1000B

Elastic Networks

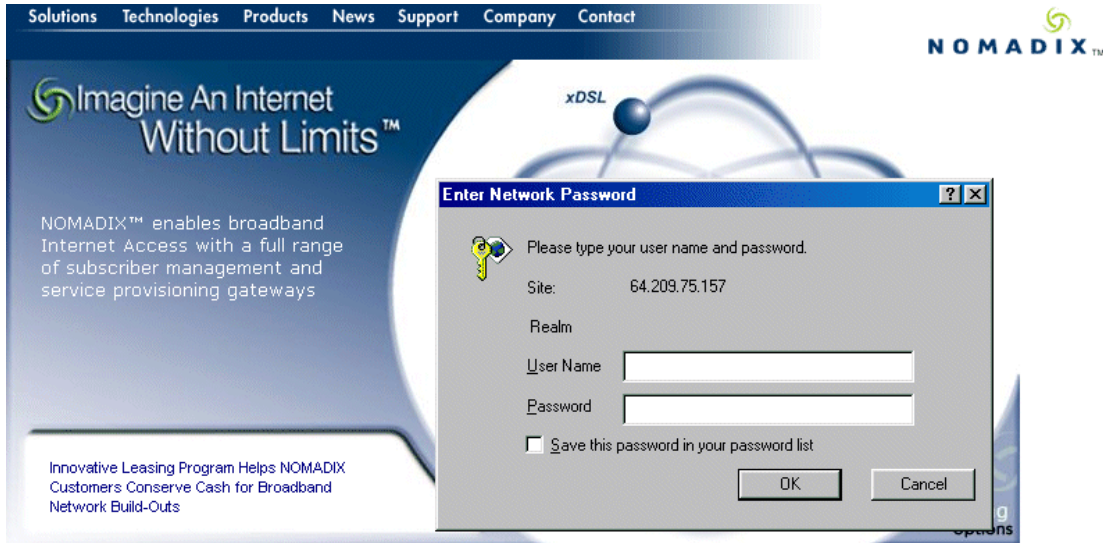
IP address:

SNMP community:



Step 2: Login to the In Room Port Mapping page.

From the room, launch a browser and go to the following url <http://usgaddress:1111/usg/roommapping> and enter in the User Name and Password that you had configured in the previous step.





Step 3: Enter in the Room Information.



IN-ROOM PORT MAPPING

Please input the room number:

Please input the room description:

Please select the access mode:

Room Free Access.

Room For Charge.

Room Blocked.

Please contact your Network Administrator in case of problems.

The information enter for the room number becomes the Location information in the Port Mapping List. This is the identifier that is sent to the PMS so it must match what the PMS has to identify the room. For example, if the PMS identifies room 1 as 001, then 001 should be entered as the room number. You will also need to select the access mode for the room. Click Submit to save your changes.

You will receive a confirmation that the change was saved successfully.

Your request was successful.
The port number assigned was: 2



Step 4: Verifying that the Port Mapping list has been created.

From the Web Management Interface, go to the Port Location Menu and select List. This will display all the ports that you have configured.

List Port-Location Assignments

Location	Port	State	Description	Subnet
102	2	Charge	Room 102	0.0.0.0