



Purpose: How to change the Subscriber Messages displayed to subscribers during the authentication process.

Click on a link below to go one of the following pages.

[Free access with New Subscribers only enabled](#)

[Username and Password or Radius authentication](#)

[Failed Username and Password or Radius authentication](#)

[Billing plans for Credit Card or PMS](#)

[Purchase confirmation page](#)

[Two-way PMS](#)

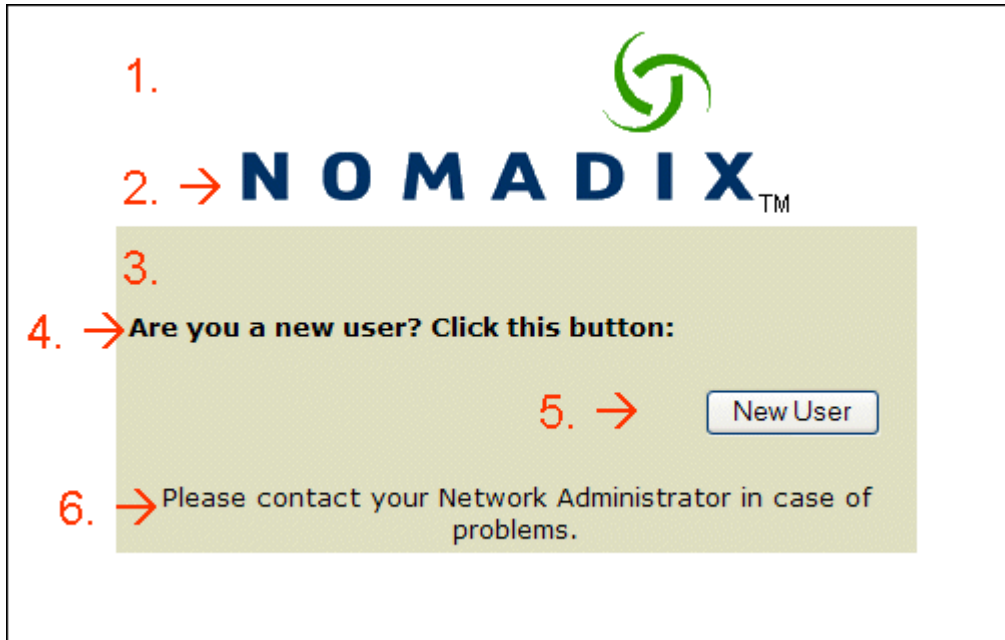
[Failed PMS billing](#)

[Micros Query and Post](#)

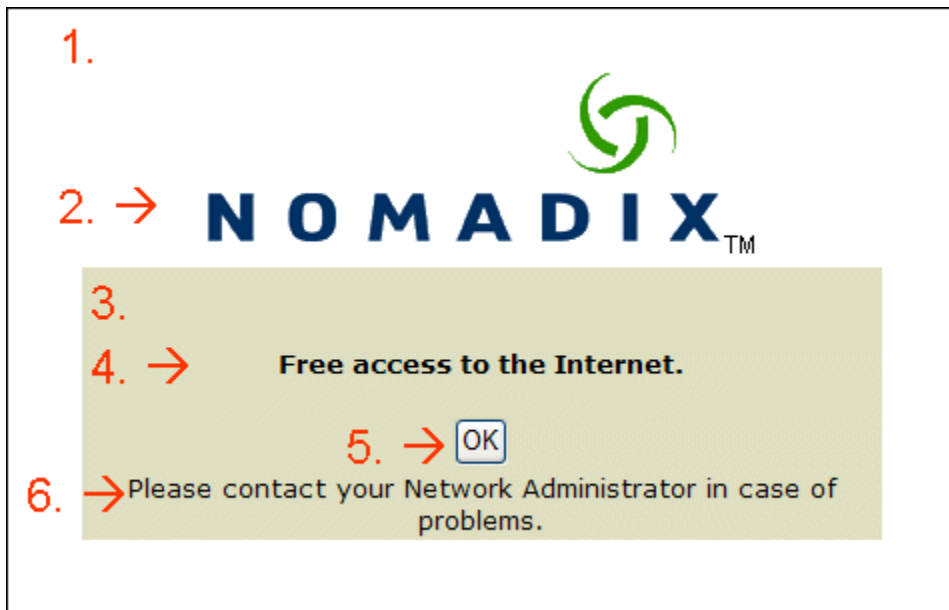
[Wired for Business two-way](#)



Free access with New Subscribers only enabled.



1. The page background color can be changed in Subscriber Interface/Login UI – Page Background Color.
2. The login logo can be changed by creating your own image uploading it to the /flash/ directory of the NSE. Please refer to the document, “How to change the login page logo.pdf”.
3. The table background color can be changed in Subscriber Interface/Login UI – Table Background Color.
4. This can be changed in Subscriber Interface/Subscriber Messages 1 of 3.
5. This can be changed in Subscriber Interface/Subscriber Buttons. Please note that when renaming buttons, do not use a name that is already configured on this page.
6. The messages can be changed in Subscriber Interface/Login UI – Contact Message.

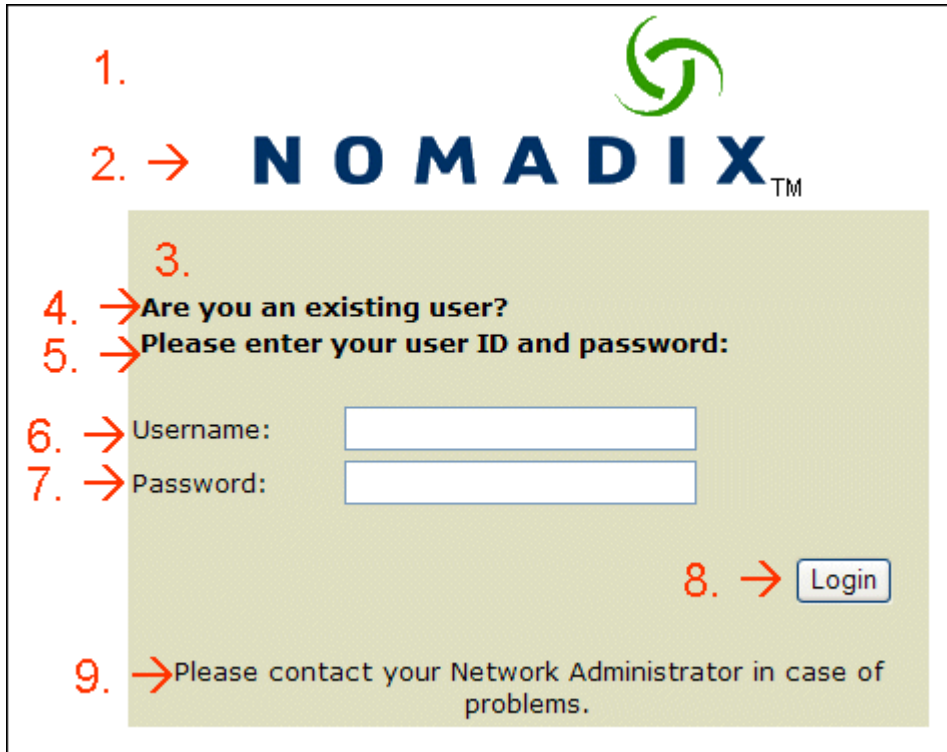


1. The page background color can be changed in Subscriber Interface/Login UI – Page Background Color.
2. The login logo can be changed by creating your own image uploading it to the /flash/ directory of the NSE. Please refer to the document, “How to change the login page logo.pdf”.
3. The table background color can be changed in Subscriber Interface/Login UI – Table Background Color.
4. This can be changed in Subscriber Interface/Subscriber Messages 1 of 3.
5. This can be changed in Subscriber Interface/Subscriber Buttons. Please note that when renaming buttons, do not use a name that is already configured on this page.
6. The messages can be changed in Subscriber Interface/Login UI – Contact Message.

[Return to top](#)



Username and Password or Radius authentication.

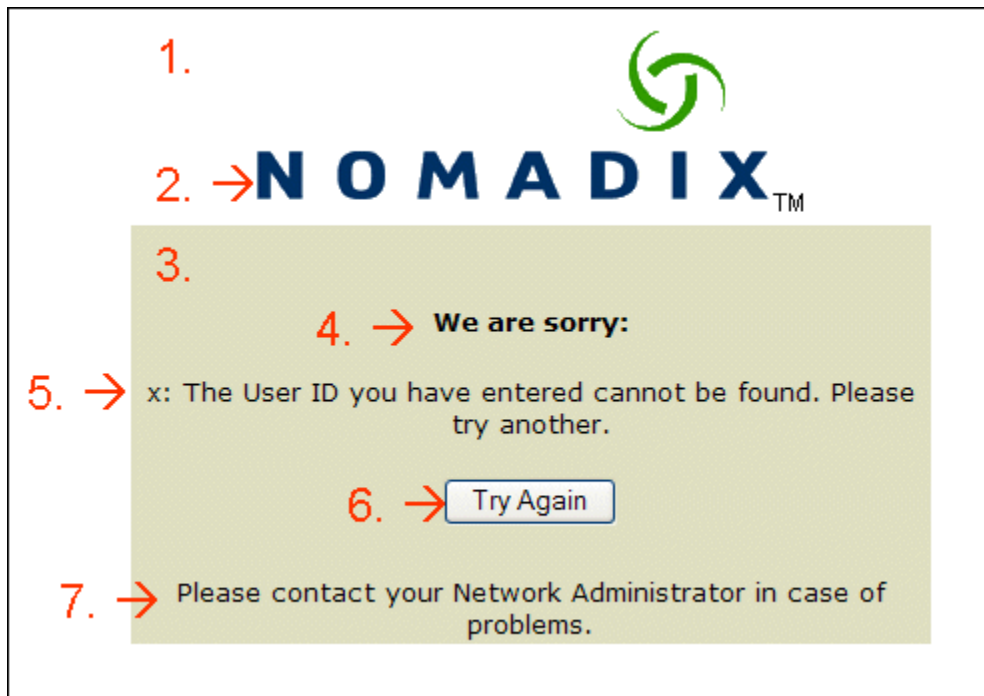


1. The page background color can be changed in Subscriber Interface/Login UI – Page Background Color.
2. The login logo can be changed by creating your own image uploading it to the /flash/ directory of the NSE. Please refer to the document, “How to change the login page logo.pdf”.
3. The table background color can be changed in Subscriber Interface/Login UI – Table Background Color.
4. This can be changed in Subscriber Interface/Subscriber Messages 1 of 3.
5. The messages can be changed in Subscriber Interface/Login UI – Existing Username Message
6. This can be changed in Subscriber Interface/Labels.
7. This can be changed in Subscriber Interface/Labels.
8. This can be changed in Subscriber Interface/Subscriber Buttons. Please note that when renaming buttons, do not use a name that is already configured on this page.
9. The messages can be changed in Subscriber Interface/Login UI – Contact Message.

[Return to top](#)



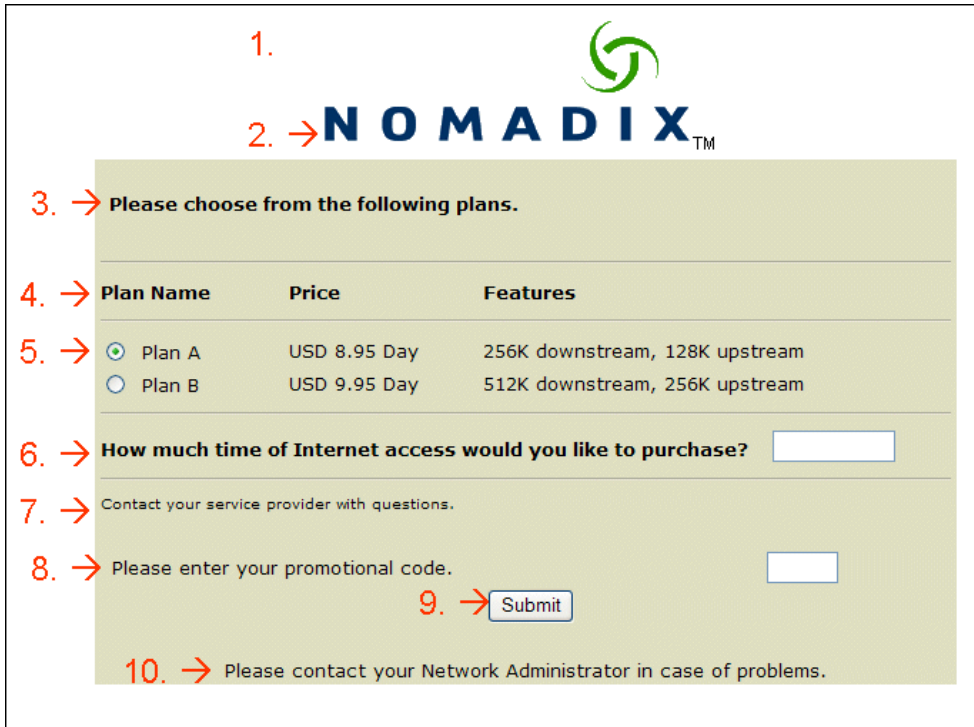
Failed Username and Password or Radius authentication.



1. The page background color can be changed in Subscriber Interface/Login UI – Page Background Color.
2. The login logo can be changed by creating your own image uploading it to the /flash/ directory of the NSE. Please refer to the document, “How to change the login page logo.pdf”.
3. The table background color can be changed in Subscriber Interface/Login UI – Table Background Color.
4. This can be changed in Subscriber Interface/Subscriber Errors 2 of 2.
5. This can be changed in Subscriber Interface/Subscriber Errors 2 of 2.
6. This can be changed in Subscriber Interface/Subscriber Buttons. Please note that when renaming buttons, do not use a name that is already configured on this page
7. The messages can be changed in Subscriber Interface/Login UI – Contact Message.

[Return to top](#)

Billing plans for Credit Card or PMS



1. →

2. → **N O M A D I X**TM

3. → Please choose from the following plans.

4. → Plan Name	Price	Features
5. → <input checked="" type="radio"/> Plan A	USD 8.95 Day	256K downstream, 128K upstream
<input type="radio"/> Plan B	USD 9.95 Day	512K downstream, 256K upstream

6. → How much time of Internet access would you like to purchase?

7. → Contact your service provider with questions.

8. → Please enter your promotional code.

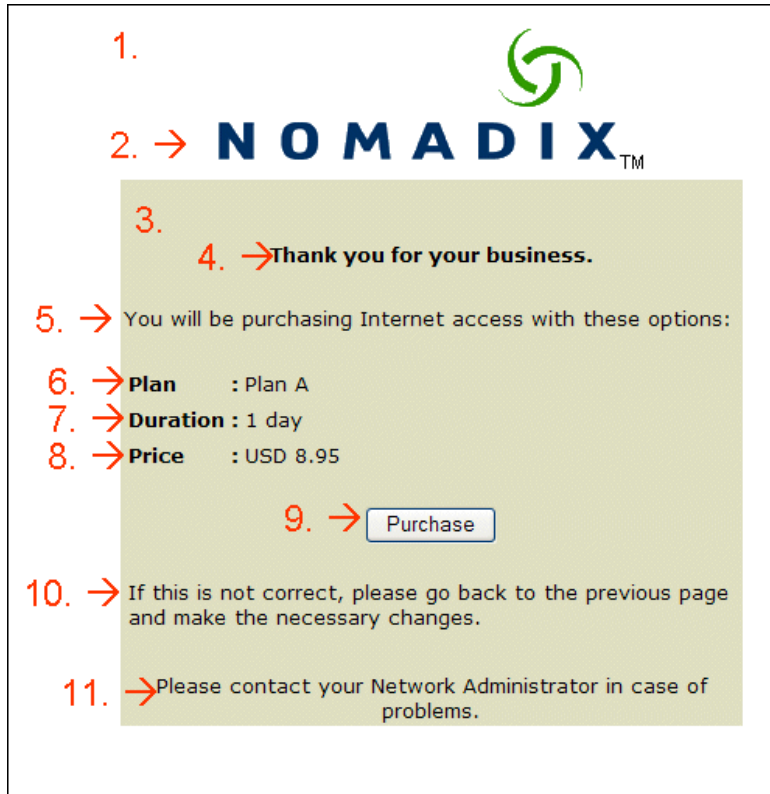
9. →

10. → Please contact your Network Administrator in case of problems.

1. The page background color can be changed in Subscriber Interface/Login UI – Page Background Color.
2. The login logo can be changed by creating your own image uploading it to the /flash/ directory of the NSE. Please refer to the document, “How to change the login page logo.pdf”.
3. The table background color can be changed in Subscriber Interface/Billing Options – Introduction Message.
4. These can be changed in Subscriber Interface/Labels.
5. These can be changed in Subscriber Interface/Billing Options. Each plan that is configured and Enabled will appear on the billing screen.
6. This can be changed in Subscriber Interface/Billing Options – Offer Message.
7. The messages can be changed in Subscriber Interface/Billing Options – Policy Message.
8. This can be changed in Subscriber Interface/Subscriber Messages 3 of 3.
9. This can be changed in Subscriber Interface/Subscriber Buttons. Please note that when renaming buttons, do not use a name that is already configured on this page.
10. The messages can be changed in Subscriber Interface/Login UI – Contact Message.

[Return to top](#)

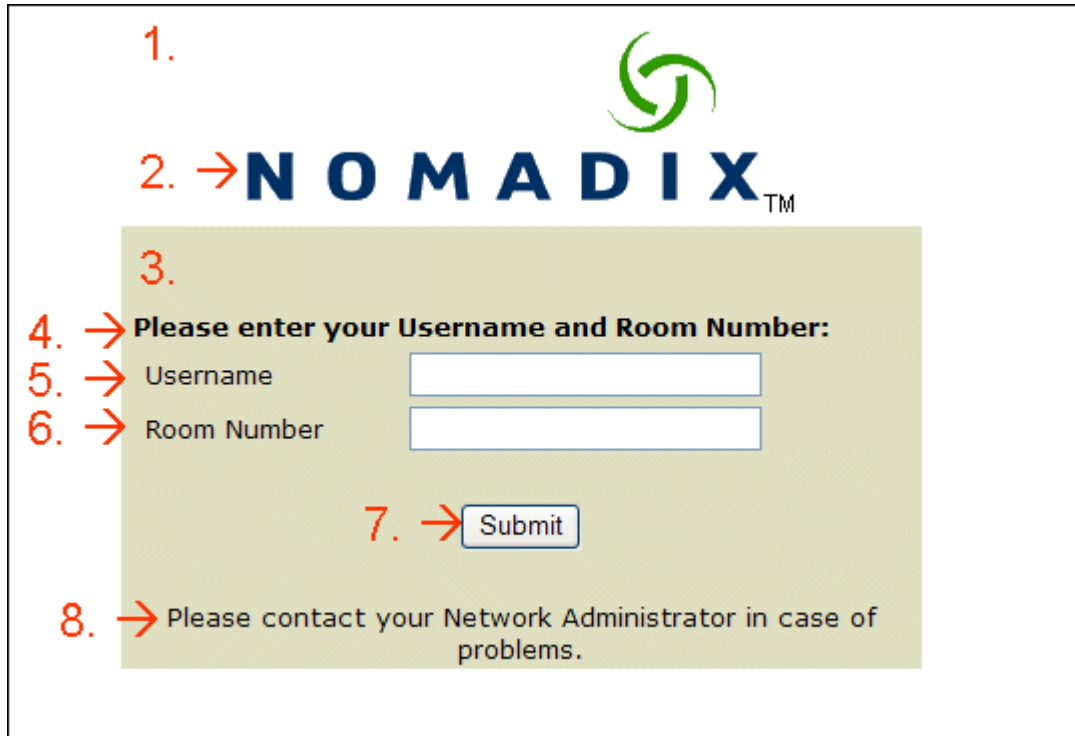
Purchase confirmation page.



1. The page background color can be changed in Subscriber Interface/Login UI – Page Background Color.
2. The login logo can be changed by creating your own image uploading it to the /flash/ directory of the NSE. Please refer to the document, “How to change the login page logo.pdf”.
3. The table background color can be changed in Subscriber Interface/Billing Options – Introduction Message.
4. This can be changed in Subscriber Interface/Subscriber Messages 3 of 3.
5. This can be changed in Subscriber Interface/Subscriber Messages 3 of 3.
6. Plan is hard coded and cannot be changed at this time.
7. Duration is hard coded and cannot be changed at this time.
8. Price is hard coded and cannot be changed at this time.
9. This can be changed in Subscriber Interface/Subscriber Buttons. Please note that when renaming buttons, do not use a name that is already configured on this page.
10. This can be changed in Subscriber Interface/Subscriber Messages 2 of 3.
11. The messages can be changed in Subscriber Interface/Login UI – Contact Message.

[Return to top](#)

Two-way PMS

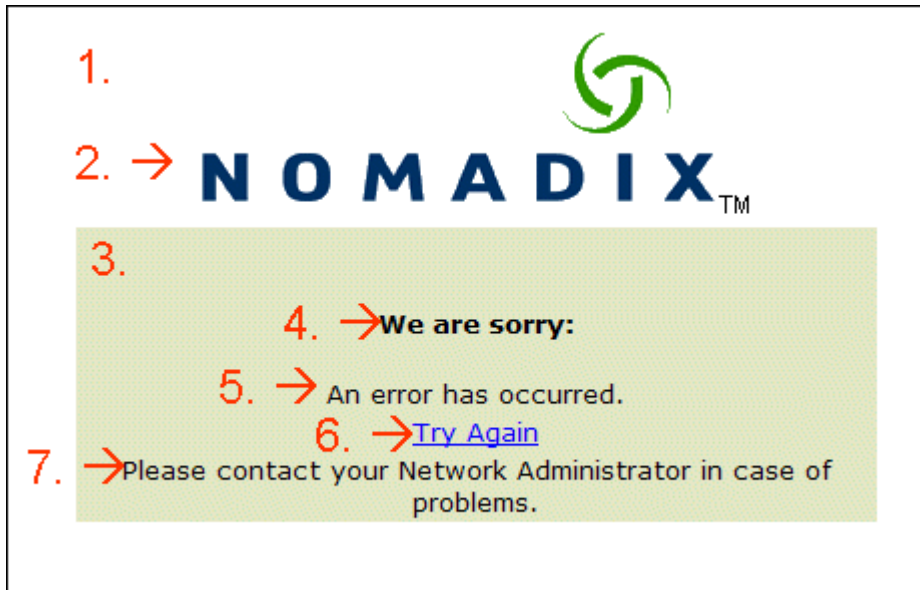


1. The page background color can be changed in Subscriber Interface/Login UI – Page Background Color.
2. The login logo can be changed by creating your own image uploading it to the /flash/ directory of the NSE. Please refer to the document, “How to change the login page logo.pdf”.
3. The table background color can be changed in Subscriber Interface/Billing Options – Introduction Message.
4. This can be changed in Subscriber Interface/Login UI – PMS Username Message.
5. This can be changed in Subscriber Interface/Labels.
6. This can be changed in Subscriber Interface/Labels.
7. This can be changed in Subscriber Interface/Subscriber Buttons. Please note that when renaming buttons, do not use a name that is already configured on this page.
8. The messages can be changed in Subscriber Interface/Login UI – Contact Message.

[Return to top](#)



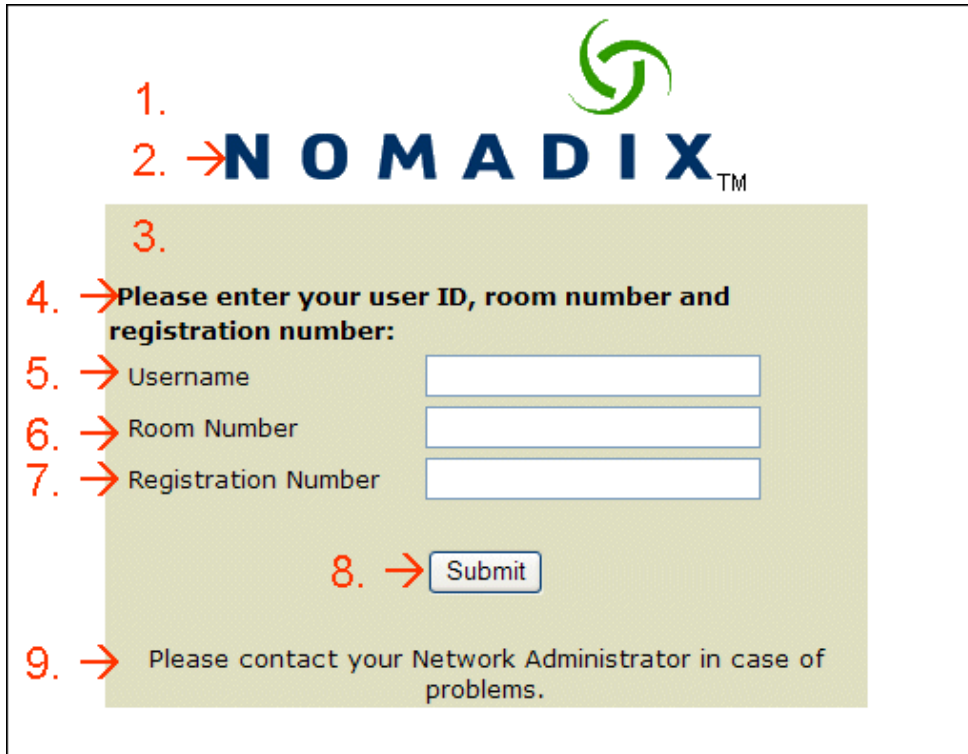
Failed PMS billing.



1. The page background color can be changed in Subscriber Interface/Login UI – Page Background Color.
2. The login logo can be changed by creating your own image uploading it to the /flash/ directory of the NSE. Please refer to the document, “How to change the login page logo.pdf”.
3. The table background color can be changed in Subscriber Interface/Billing Options – Introduction Message.
4. This can be changed in Subscriber Interface/Subscriber Errors 2 of 2.
5. This can be changed in Subscriber Interface/Subscriber Errors 1 of 2.
6. This can be changed in Subscriber Interface/Subscriber Buttons – Try Again. Please note that when renaming buttons, do not use a name that is already configured on this page.
7. The messages can be changed in Subscriber Interface/Login UI – Contact Message.

[Return to top](#)

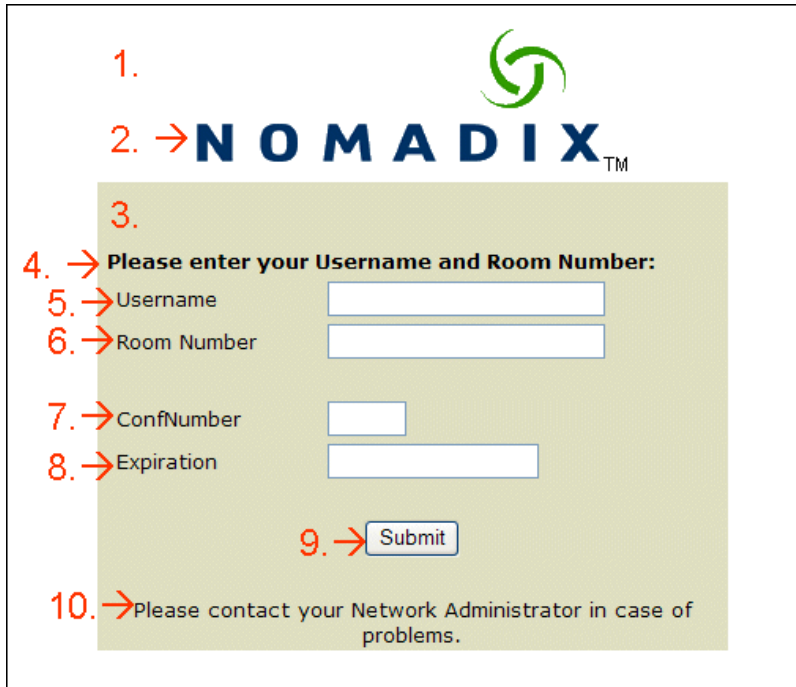
Micros Query and Post



1. The page background color can be changed in Subscriber Interface/Login UI – Page Background Color.
2. The login logo can be changed by creating your own image uploading it to the /flash/ directory of the NSE. Please refer to the document, “How to change the login page logo.pdf”.
3. The table background color can be changed in Subscriber Interface/Billing Options – Introduction Message.
4. This is hard coded. Please contact Nomadix Technical Support regarding changing this.
5. This can be changed in Subscriber Interface/Subscriber Labels – PMS Username.
6. This can be changed in Subscriber Interface/Subscriber Labels – PMS Room Number.
7. This can be changed in Subscriber Interface/Subscriber Labels – PMS Registration Number.
8. This can be changed in Subscriber Interface/Subscriber Buttons. Please note that when renaming buttons, do not use a name that is already configured on this page.
9. The messages can be changed in Subscriber Interface/Login UI – Contact Message.

[Return to top](#)

Wired for Business two-way



1. The page background color can be changed in Subscriber Interface/Login UI – Page Background Color.
2. The login logo can be changed by creating your own image uploading it to the /flash/ directory of the NSE. Please refer to the document, “How to change the login page logo.pdf”.
3. The table background color can be changed in Subscriber Interface/Billing Options – Introduction Message.
4. This can be changed in Subscriber Interface/Login UI – PMS Username Message.
5. This can be changed in Subscriber Interface/Subscriber Labels – PMS Username.
6. This can be changed in Subscriber Interface/Subscriber Labels – PMS Room Number.
7. This is hard coded. Please contact Nomadix Technical Support regarding changing this.
8. This is hard coded. Please contact Nomadix Technical Support regarding changing this.
9. This can be changed in Subscriber Interface/Subscriber Buttons. Please note that when renaming buttons, do not use a name that is already configured on this page.
10. The messages can be changed in Subscriber Interface/Login UI – Contact Message.

[Return to top](#)